



GIRAFFE[®]
BOTTLE

HYDRATION WITH A PURPOSE™

**HANDS FREE
DRINKING SYSTEM**

CARE & USE GUIDE



FOR THE
**TOWER
NECK**

**REGISTER
YOUR
PRODUCT**

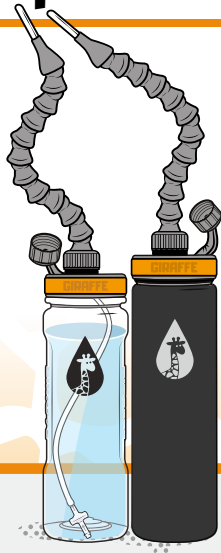


FOLLOW US!

WWW.GIRAFFEBOTTLE.COM/REGISTER

Components + Care

Tritan™ + Stainless Steel Bottle Kits

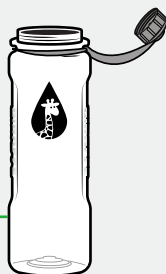


DO NOT PLACE BOTTLES IN FREEZER/MICROWAVE

Recommended Max Temperature: 185°F / 85°C



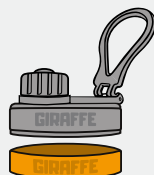
SAFE FOR DISHWASHER



TRITAN BOTTLE



TRITAN LID



STAINLESS LID



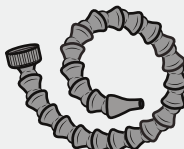
NOT SAFE FOR DISHWASHER



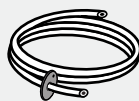
HAND-WASH ONLY



STAINLESS BOTTLE



MODULAR NECK



DRINKING TUBE



CHECK VALVE



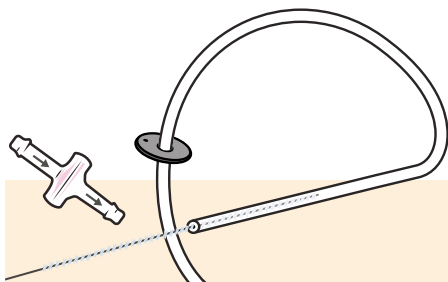
Avoid submerging modular neck during cleaning—wipe down outer surface.

Drinking Tube + Check Valve

The check valve must be removed from the drinking tube during cleaning and should **NOT** be pierced with a brush.



USE INCLUDED CLEANING BRUSH

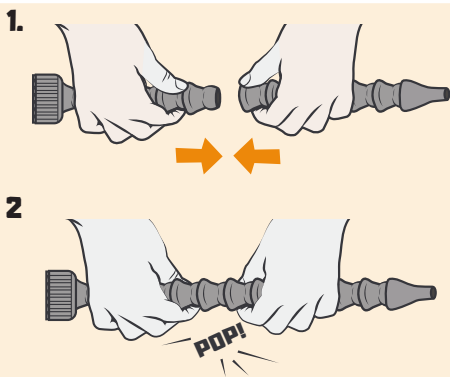
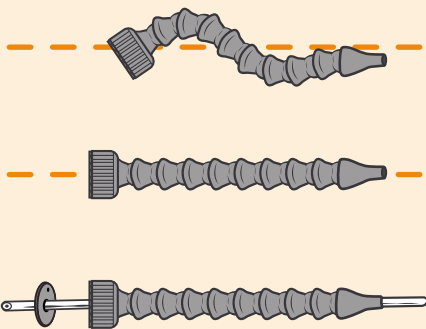
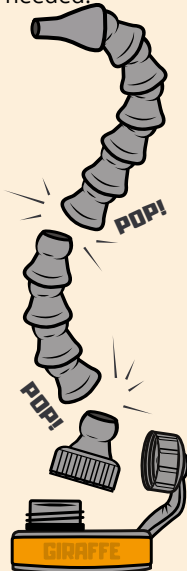


If you have a taste sensitivity to the supplied drinking tube (after washing), inquire for an alternate tube



TOWER Neck Assembly

The assembly is designed to **POP** apart to adjust neck length as needed.



REPLACEMENT SCHEDULE



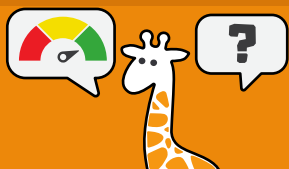
DRINKING TUBE MONTHLY

CLEANING BRUSH . . EVERY 3 MONTHS

CHECK VALVE MONTHLY

NECK ASSEMBLY . . . EVERY 8 MONTHS

Replace integral parts of the Giraffe Bottle Tower System regularly to maintain optimal bottle hygiene and function.



Recommended Use

Which Beverages Can You Drink?

All Giraffe Bottle systems are primarily recommended for **water and other non-viscous liquids**. The thicker the beverage, the harder it will be to create suction.



Ideal Use: The check valve featured in the Tower system is primarily designed for **thin non-viscous drinks** such as **water, coffee, or tea**.



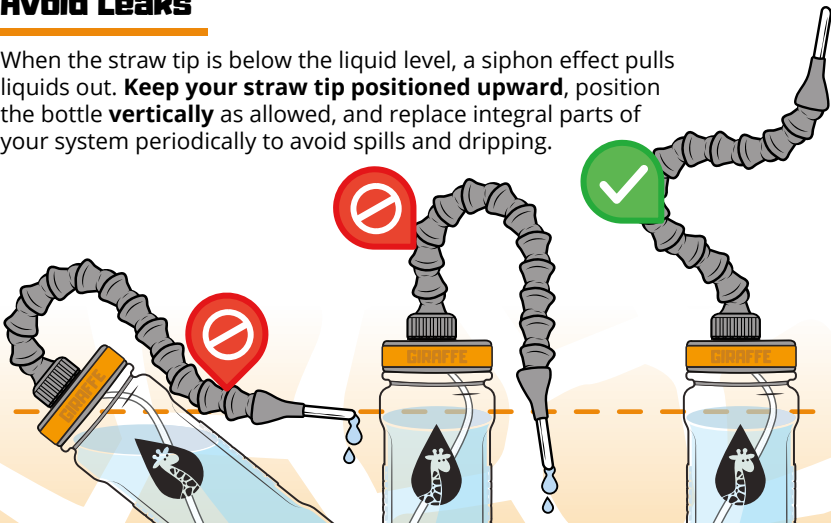
Use with Extra Care: You can use flavored waters, sports drinks, and juice, but excess sugar may reduce product lifespan. After use, rinse straw & check valve thoroughly.



Not Recommended: Using viscous or thicker liquids can clog the straw or damage the check valve. We don't recommend using Powdered Drinks, Ice-blended Beverages (ICEEs, Frappuccinos, etc), Carbonated Soda, Juices with Pulp, Shakes or Smoothies.

Avoid Leaks

When the straw tip is below the liquid level, a siphon effect pulls liquids out. **Keep your straw tip positioned upward**, position the bottle **vertically** as allowed, and replace integral parts of your system periodically to avoid spills and dripping.

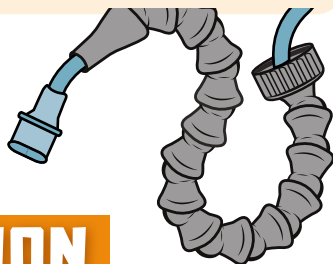
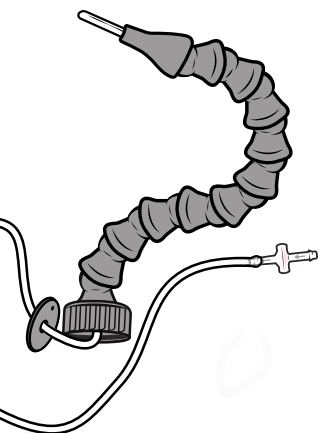


! Keep the bottle vertical / lower than the straw tip to prevent siphon effect

THE TOWER SYSTEM



NECK LENGTHS AVAILABLE	15", 25", 30", 36" (38 cm, 64 cm, 76 cm, 91 cm)
DRINKING TUBE TYPE	Small, Housed in Modular Plastic 5/32" (4mm) Inner Diameter
FEATURED LIQUID CONTROL	1-Way Check Valve *Removable from Tube
BOTTLE HOLDER OPTIONS	Clamp Mount, Rail Mount, Under Cushion, Carry Bag & Desktop
THIS SYSTEM IS BEST FOR:	Individuals with little to no upper body mobility, and mild-to-moderate reduced lung function.



LEVELS OF

HYDRATION

Giraffe Bottle offers a few unique options for Hands-Free Hydration. Each one is tailored for different needs and purposes, with experiences of individuals in mind.

Our systems are cross compatible with every bottle; explore them all and see which fits your needs best!



**VISIT
FAQ'S**

Questions about your current system?

WWW.GIRAFFEBOTTLE.COM/PRODUCT-FAQ

LEARNING CENTER

Check out the Learning Center on GiraffeBottle.com to explore Hands-Free Hydration, and Frequently Asked Questions about our products. Feel free to contact Giraffe Bottle with any questions, comments, or feedback.



Giraffe Bottle Accessories



Replacement Giraffe Bottles

- Tritan Clear: #504111
- Matte Black Stainless: #504231
- Burnt Orange Stainless: . . . #504212
- Ltd. Ed. SGN Pattern: #504221



Drinking Tube + Check Valve



- For 15" Neck: #504082
- For 25" Neck: #504084
- For 30" Neck: #504085
- For 36" Neck: #504086

Tower Starter Kit



- 15" Neck: #505152
- 25" Neck: #505154
- 30" Neck: #505155
- 36" Neck: #505156

Clamp Mount Bottle Holder



Mounts to wheelchairs and other round tubing.

#500311

Cushion Companion Bottle Holder



Slide under mattresses, seat cushions, and other surfaces.

#500332

Weighted Desktop Base



Keep bottles secure and upright on flat surfaces with this sturdy bottle holder.

#500323

Rail Mount Bottle Holder



Attaches to powerchairs with accessory rails (includes Quantum™, Permobil™).

#500314

More Available Online

For alternate drinking tubes (due to sensitivity in taste), accessories, and other replacement parts, explore online or contact Giraffe Bottle.

WWW.GIRAFFEBOTTLE.COM

SHOWN: TOWER TUBE BRUSH, SILICONE BOTTLE BRUSH, SUCTION BULB



GIRAFFE BOTTLE

a division of:
Oak Hill BRANDS CORP.

SALES@GIRAFFEBOTTLE.COM
1-630-922-5004

Product designed and assembled in the U.S.A. Manufactured with U.S. and global components.

Information and specifications listed are subject to change at any time without notice.

Permobil, Quantum, and all other brands that may have been mentioned, either directly or indirectly, are trademarks of someone else and are not the property of Oak Hill Brands. Giraffe Bottle is a registered trademark of Oak Hill Brands Corp.