



GIRAFFE[®]
BOTTLE

HYDRATION WITH A PURPOSE™

**ASSISTIVE
DRINKING SYSTEM**

CARE & USE GUIDE



FOR THE
**JOURNEY
NECK**

**REGISTER
YOUR
PRODUCT**



FOLLOW US!

WWW.GIRAFFEBOTTLE.COM/REGISTER

Components + Care

Tritan™ + Stainless Steel Bottle Kits

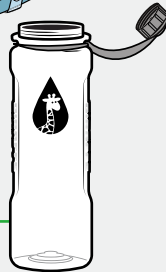


DO NOT PLACE BOTTLES IN FREEZER/MICROWAVE

Recommended Max Temperature: 185°F / 85°C



SAFE FOR DISHWASHER



TRITAN BOTTLE



TRITAN LID



STAINLESS LID



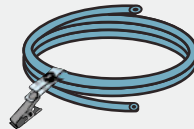
NOT SAFE FOR DISHWASHER



HAND-WASH ONLY



STAINLESS BOTTLE



DRINKING TUBE WITH CLIP



BITE VALVE



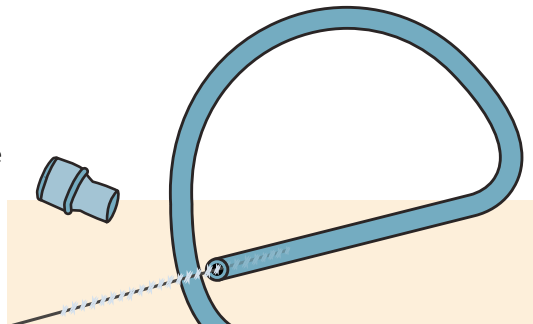
Note the bite valve is not recommended for small children or users without strong mouth function due to risk of choking.

Drinking Tube + Bite Valve

The bite valve must be removed from the drinking tube during cleaning and should **NOT** be pierced with a brush.



USE INCLUDED CLEANING BRUSH

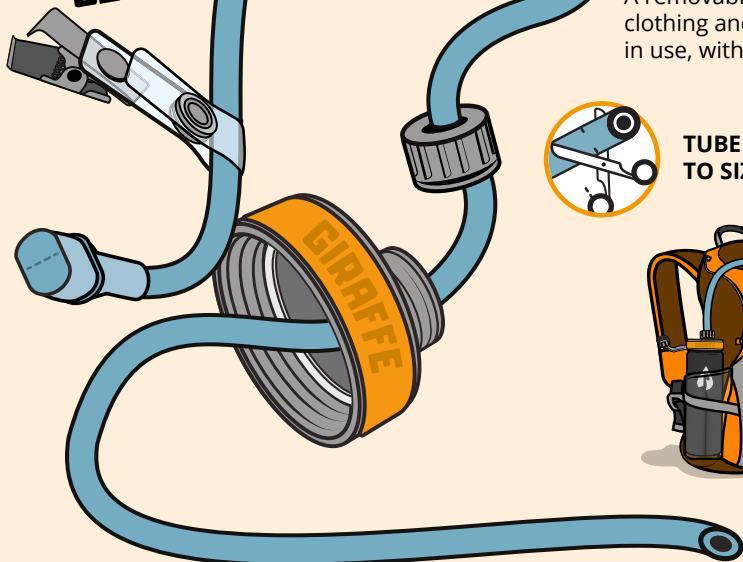


If you have a taste sensitivity to the supplied drinking tube (after washing), inquire for an alternate tube.

JOURNEY Neck Assembly

A removable clip can attach to clothing and fabric when not in use, without risk of leaks.

CLICK!



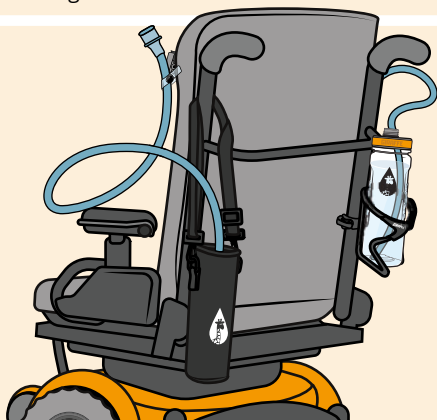
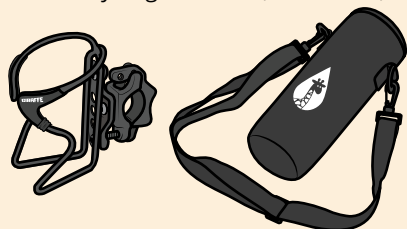
**TUBE CAN BE CUT
TO SIZE IF NEEDED**



If you are concerned the bite valve will present a hazard as a small object, remove from the drinking tube during use.

Multiple Mounts

Pair Journey Systems with Bottle Holders, or a Carry Bag for chairs, shoulders, etc.



REPLACEMENT SCHEDULE



DRINKING TUBE MONTHLY

CLEANING BRUSH . . . EVERY 3 MONTHS

BITE VALVE MONTHLY

Replace integral parts of the Giraffe Bottle Journey System regularly to maintain optimal bottle hygiene and function.



Recommended Use

Which Beverages Can You Drink?

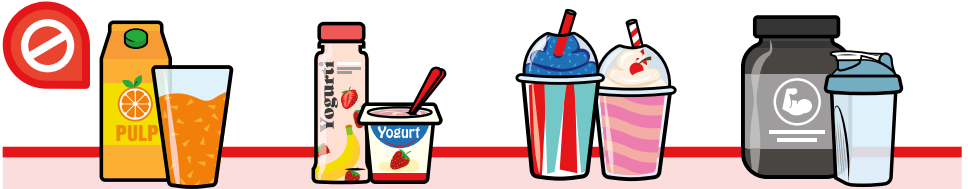
All Giraffe Bottle systems are primarily recommended for **water** and **other non-viscous liquids**. Remove the bite valve when enjoying other beverages.



Ideal Use: The bite valve featured in the Journey system is primarily designed for **thin non-viscous drinks** such as **water, coffee, tea** or **soda**.



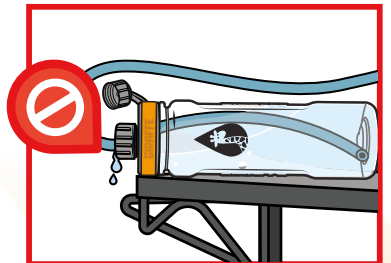
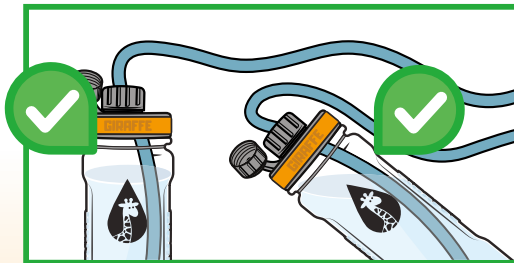
Use with Extra Care: You can use flavored waters, sports drinks, and juice, but excess sugar may reduce product lifespan. After use, rinse the straw and bite valve thoroughly. Remove bite valve from the tube before cleaning; don't pierce it.



Not Recommended: Using viscous or thicker types of liquids can clog the straw or bite valve. We don't recommend using Powdered Drinks, Ice-blended Beverages (ICEEs, Frappuccinos, etc), Juices with Pulp, Shakes or Smoothies.

Avoid Leaks

To avoid leaks during use, **do not** place the bottle completely on it's side, or flip upside down.



The Journey System is free-standing, and perfect for a variety of active applications, including: post-op care, postpartum recovery, kayaking, hiking, biking, and more.

! This system is recommended for individuals with good control over mouth functions

THE JOURNEY SYSTEM

NECK LENGTHS AVAILABLE

36 Inch (91 cm)

*Can be cut to length if needed

DRINKING TUBE TYPE

Large Flexible Tube

1/4" (6.4mm) Inner Diameter

FEATURED LIQUID CONTROL

Bite Valve

*Removable from Tube

BOTTLE HOLDER OPTIONS

Clamp Mount, Rail Mount, Under Cushion, Carry Bag & Desktop

THIS SYSTEM IS BEST FOR:

Individuals with limited upper body mobility, combined with full lung and mouth function.

LEVELS OF

HYDRATION

Giraffe Bottle offers a few unique options for Hands-Free Hydration. Each one is tailored for different needs and purposes, with experiences of individuals in mind.

Our systems are cross compatible with every bottle; explore them all and see which fits your needs best!



**VISIT
FAQ'S**

Questions about your current system?

WWW.GIRAFFEBOTTLE.COM/PRODUCT-FAQ

LEARNING CENTER

Check out the Learning Center on GiraffeBottle.com to explore Hands-Free Hydration, and Frequently Asked Questions about our products. Feel free to contact Giraffe Bottle with any questions, comments, or feedback.

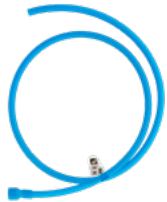


Giraffe Bottle Accessories



Replacement Giraffe Bottles

- Tritan Clear: #504111
- Matte Black: #504231
- Burnt Orange: #504212
- Ltd. Ed. SGN Pattern: #504221



Drinking Tube + Bite Valve

Replacement tube/valve combo for Journey systems.

#505181



Bottle Carry Bag w/ Strap

Carry bottles on shoulders, looped over chairs, and more.

#504062



Clamp Mount Bottle Holder

Mounts to wheelchairs and other round tubing.

#500311



Cushion Companion Bottle Holder

Slide under mattresses, seat cushions, and other surfaces.

#500332



Weighted Desktop Base

Keep bottles secure and upright on flat surfaces with this sturdy bottle holder.

#500323



Rail Mount Bottle Holder

Attaches to powerchairs with accessory rails (includes Quantum™, Permobil™).

#500314



Bite Valves, Pack of 3

3 replacement silicone bite valves for the Tower XL and Journey systems.

#504672

More Available Online

For alternate drinking tubes (due to sensitivity in taste), accessories, and other replacement parts, explore online or contact Giraffe Bottle.

WWW.GIRAFFEBOTTLE.COM



GIRAFFE
BOTTLE

a division of:
Oak Hill
BRANDS CORP

SALES@GIRAFFEBOTTLE.COM

1-630-922-5004

Product designed and assembled in the USA. Manufactured with U.S. and global components.

Information and specifications listed are subject to change at any time without notice.

Permobil, Quantum, and all other brands that may have been mentioned, either directly or indirectly, are trademarks of someone else and are not the property of Oak Hill Brands. Giraffe Bottle is a registered trademark of Oak Hill Brands Corp.